

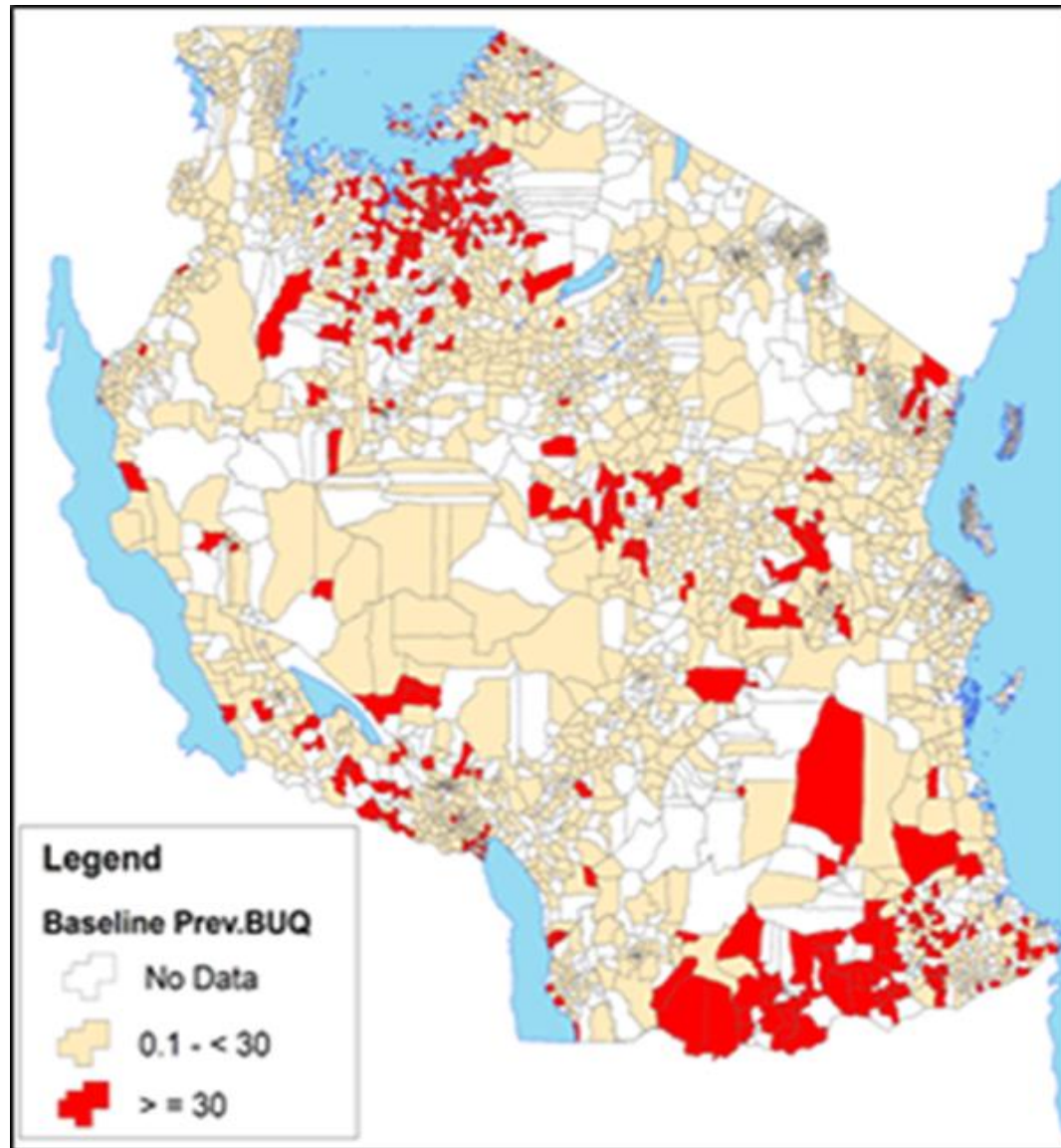


Unraveling Success: Schistosomiasis Impact Assessments in Tanzania

Dr. George Kabona
Program Manager-National NTD Control Programme, Tanzania



Schistosomiasis Baseline Assessment



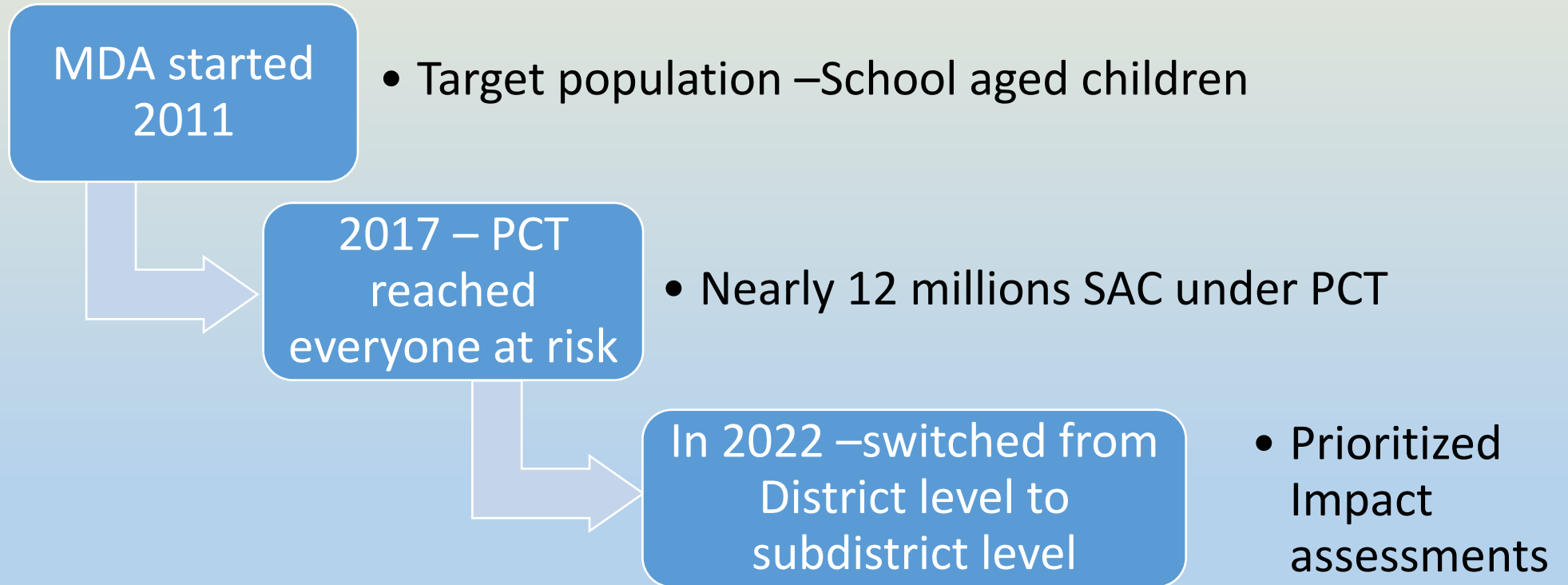
- In Tanzania, Schistosomiasis baseline survey was conducted in 2004 in 21 regions and prevalence by ward was as follows:

PREVALENCE	No of Wards
<10%	1883
≥10% < 50%	1504
≥50%	65

Population at risk was around 43mil people.



Interventions History





Schistosomiasis Impact Assessment in 2016



2016 Impact Assessment: conducted in 5 Regions of Mwanza (10 wards), Kigoma (16 wards), Mara (24 wards), Kagera(26 wards), and Shinyanga (18 wards). The Prevalence was as follows:

PREVALENCE	No of Wards
<1%	56 (60%)
$\geq 1\% < 10\%$	24
$\geq 10\% < 50\%$	13
$\geq 50\%$	1



Schistosomiasis Impact Assessment in 2017



2017 Impact Assessment: conducted in 5 Regions of Mwanza (12 wards), Kigoma (24 wards), Mara (698 wards), Kagera(29 wards), and Shinyanga (24 wards). The Prevalence was as follows:

PREVALENCE	No of Wards
<1%	492 (75%)
$\geq 1\% < 10\%$	97
$\geq 10\% < 50\%$	63
$\geq 50\%$	4



Schistosomiasis Impact Assessment in 2018



2018 Impact Assessment: conducted in 5 Regions of Mwanza (6 wards), Kigoma (16 wards), Mara (189 wards), Kagera (20 wards), and Shinyanga (16 wards). The Prevalence was as follows:

PREVALENCE	No of Wards
<1%	222 (90%)
$\geq 1\% < 10\%$	20
$\geq 10\% < 50\%$	5
$\geq 50\%$	0



Schistosomiasis Impact Assessment in 2021



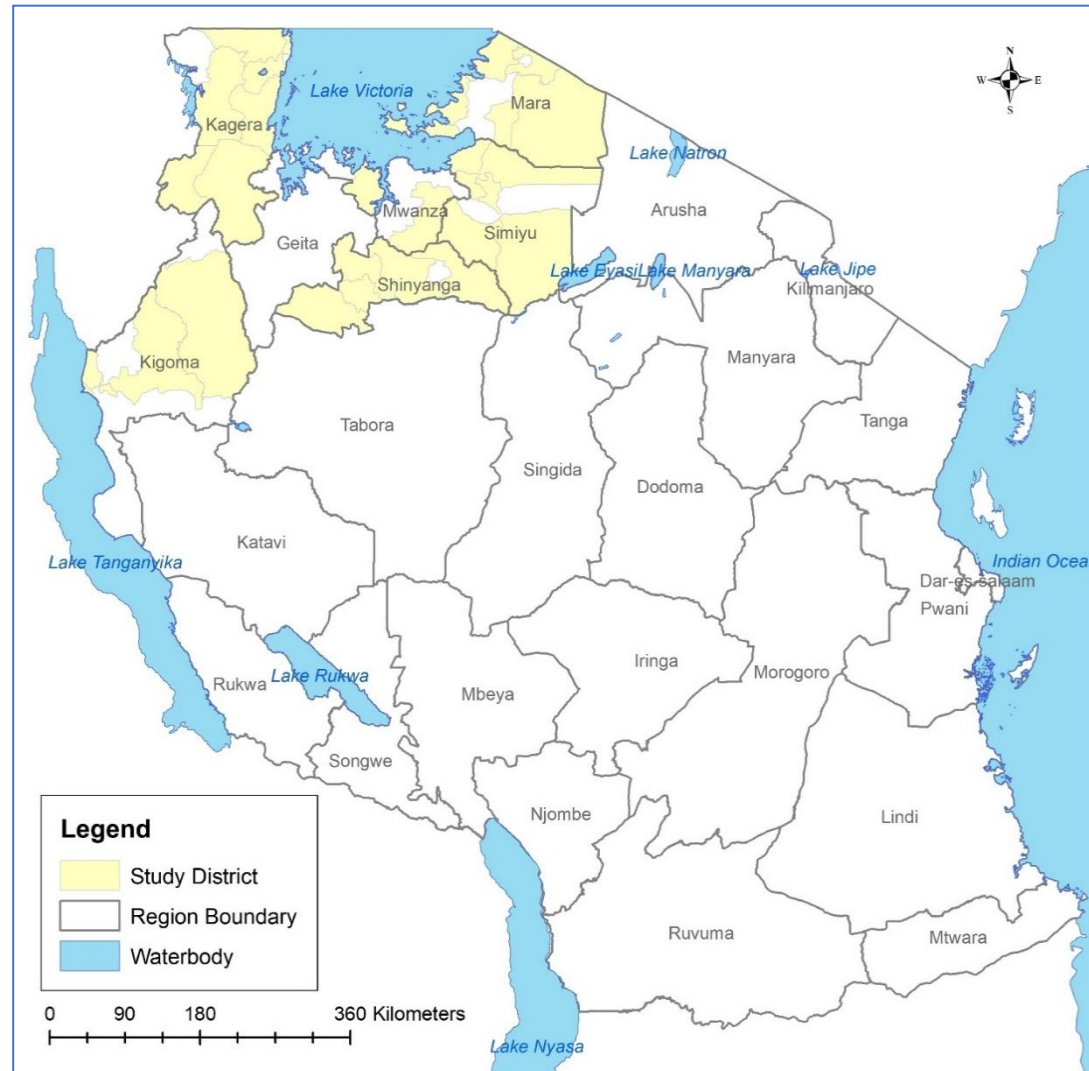
2021 Impact Assessment: conducted in 5 Regions or Mwanza, Mara, Kigoma, Kagera, Simiyu and Shinyanga . The Prevalence was as follows:

MAPPING

PREVALENCE	No of Wards
<1%	222 (76%)
≥1% < 10%	34
≥10% < 50%	26
≥50%	8

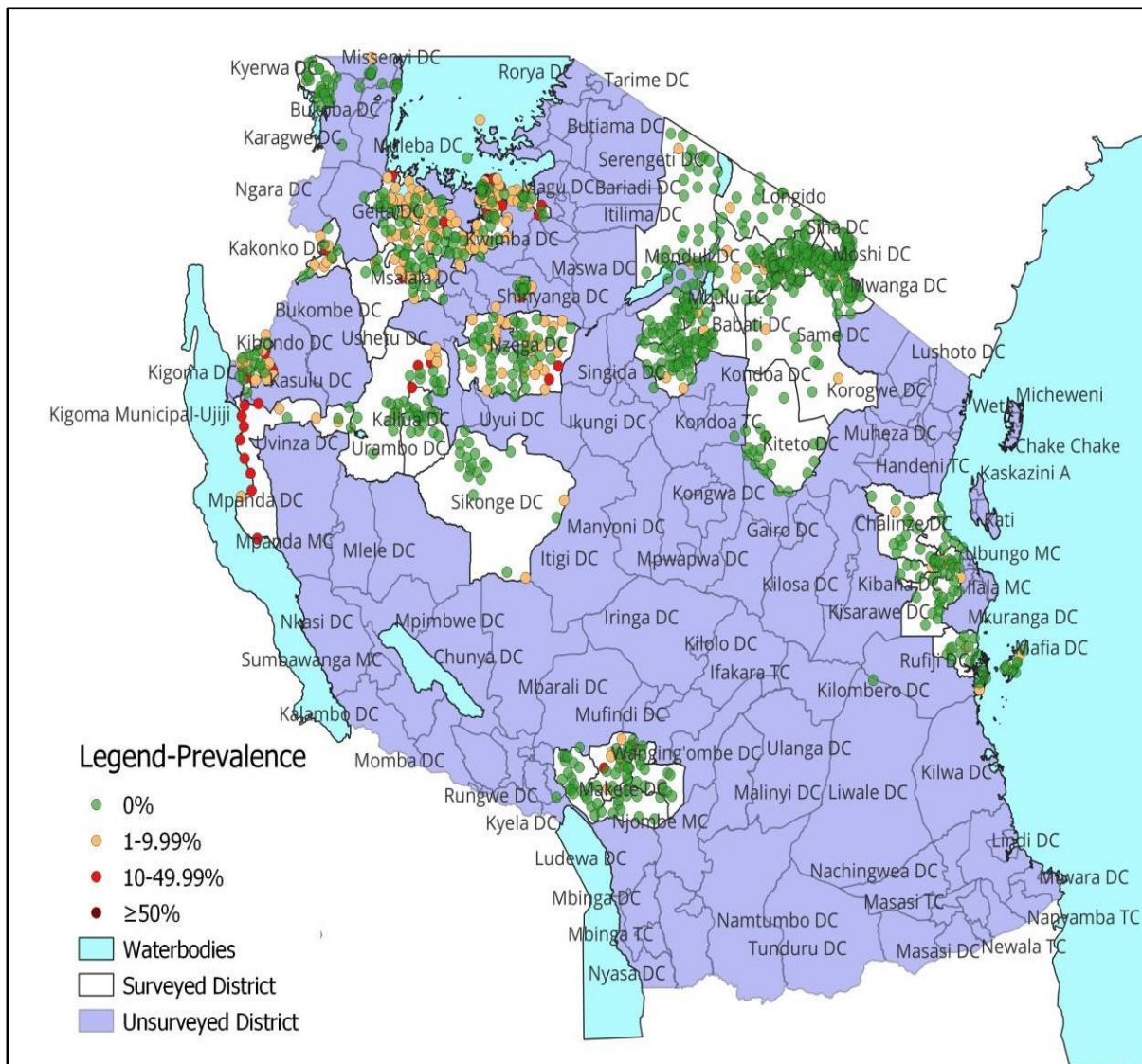
SENTINEL SITES

PREVALENCE	No of Wards
<1%	219 (75%)
≥1% < 10%	29
≥10% < 50%	33
≥50%	9





Schistosomiasis Impact Assessment in 2022

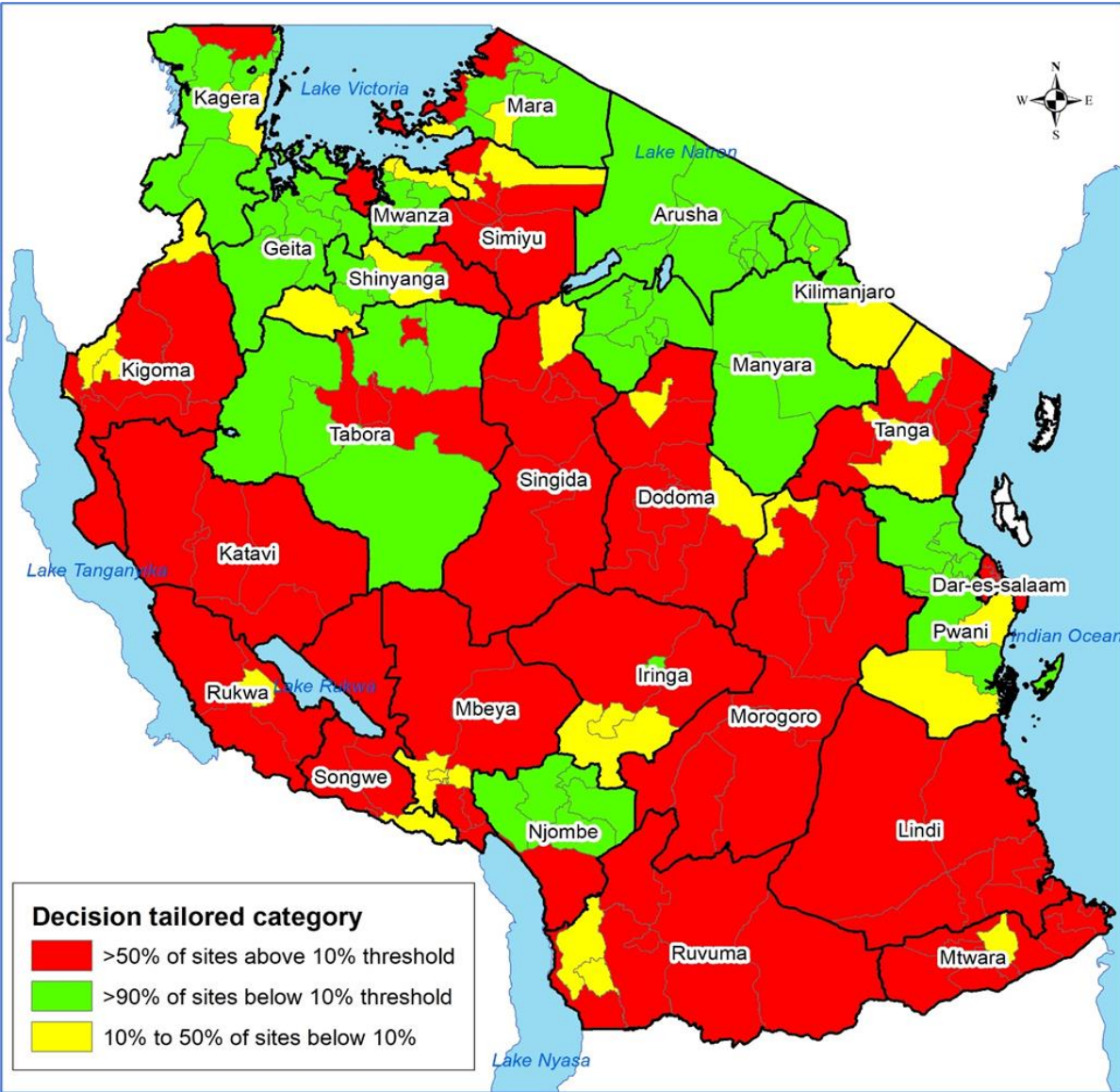


2022 Impact Assessment: conducted in 11 Regions of Mwanza, Kigoma, Kagera, geita, Tabora, Njombe, pwani, Kilimanjaro, Arusha, Manyara and Shinyanga . The Prevalence was as follows:

PREVALENCE	No of Wards
<1%	799 (75%)
≥1% < 10%	217
≥10% < 50%	40
≥50%	2



Current status of Schisto prevalence



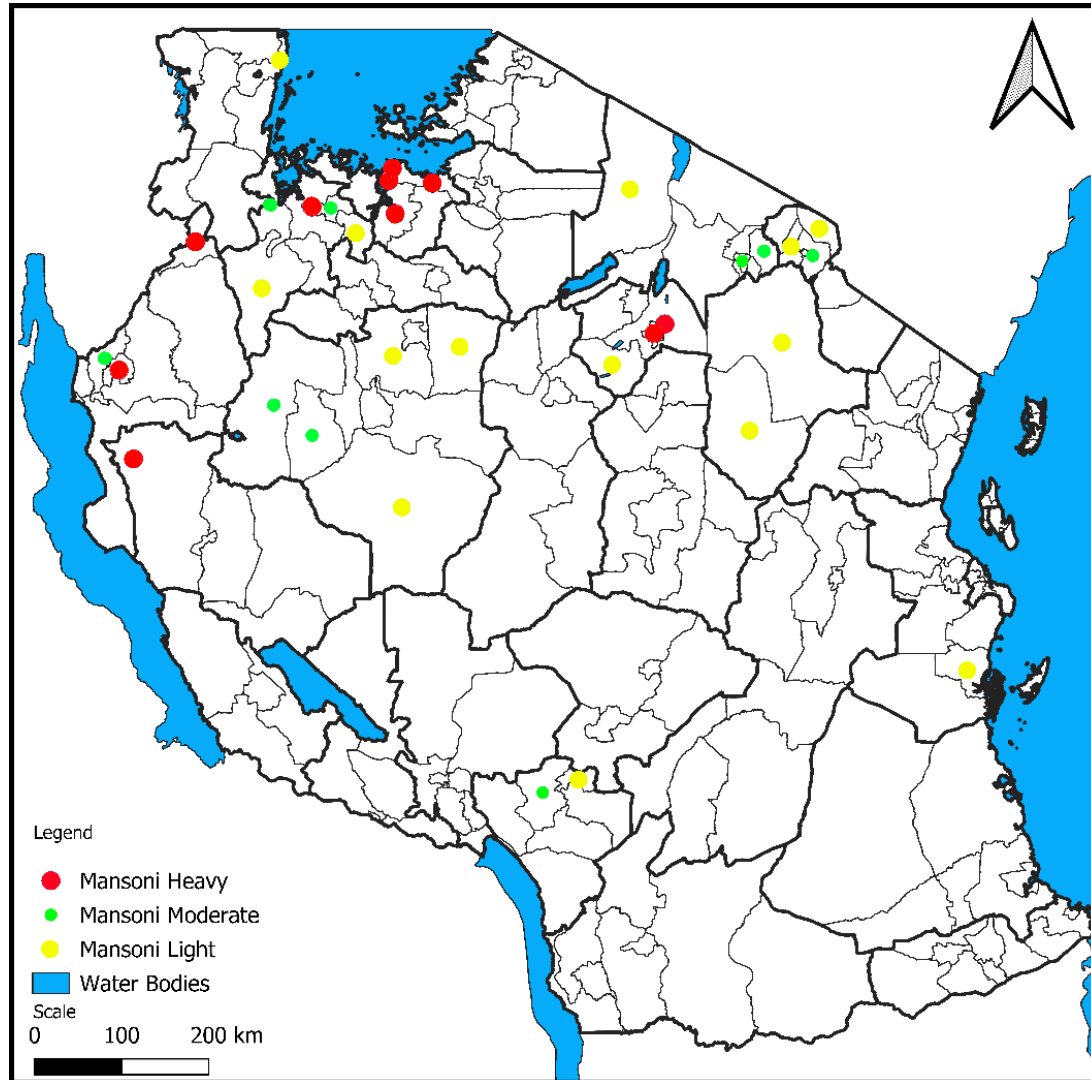
PREVALENCE	No of Wards
<1%	983
$\geq 1\% < 10\%$	387
$\geq 10\% < 50\%$	2201
$\geq 50\%$	515

Decision tailored category

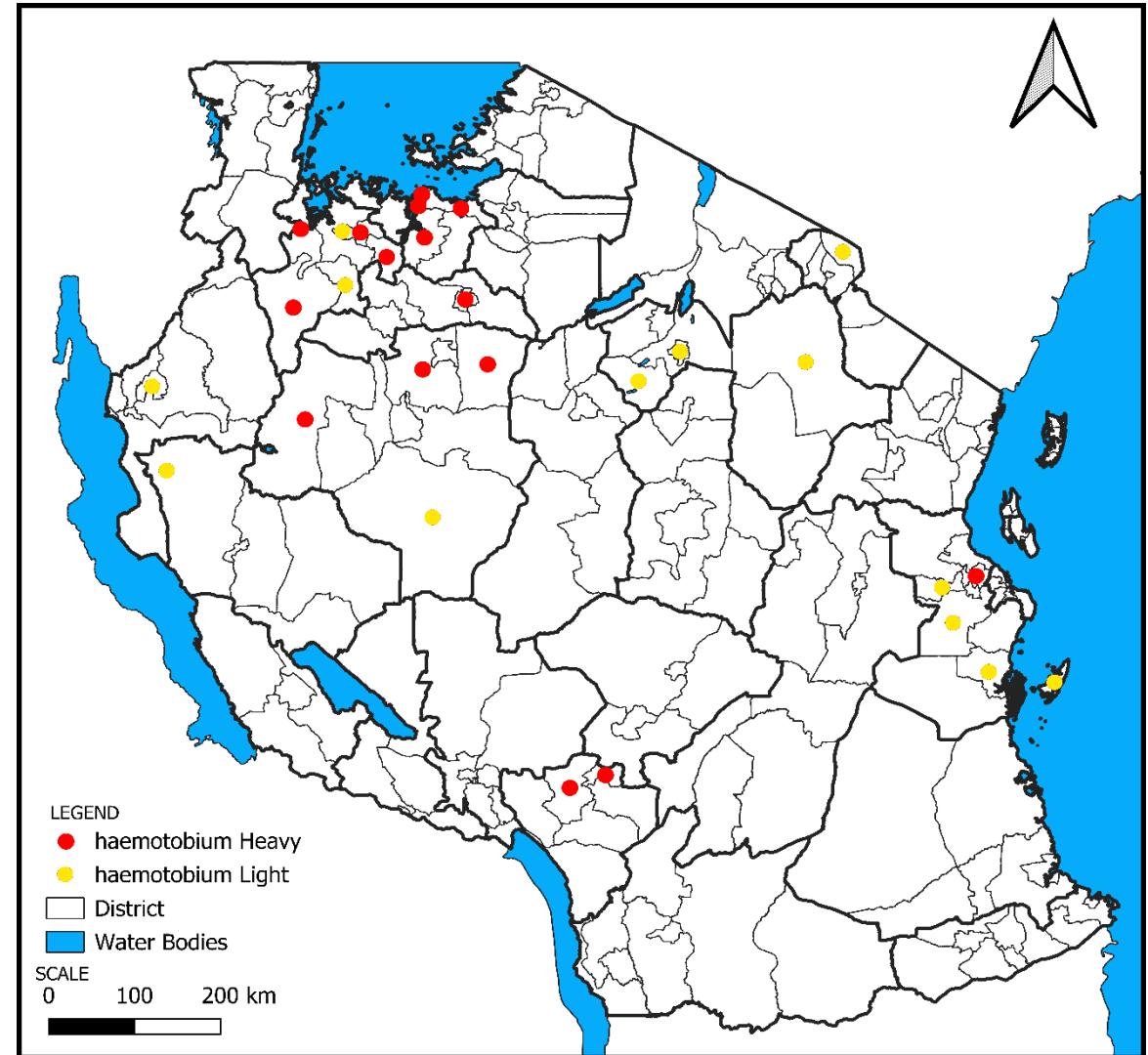
- >50% of sites above 10% threshold
- >90% of sites below 10% threshold
- 10% to 50% of sites below 10%



Schistosoma mansoni intensity-2022

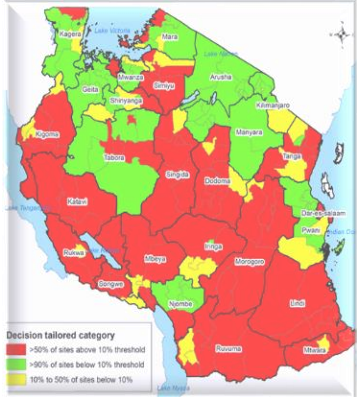


Schistosoma haematobium intensity-2022





Future Plans



Complete Impact Assessment (102 district councils remaining)

- **Methodology –from 2023 onwards- SOS study**



Challenges



1. Financial
2. Methodology



MINISTRY OF HEALTH

NEGLECTED TROPICAL DISEASES CONTROL PROGRAM (NTDCP)



THANK YOU